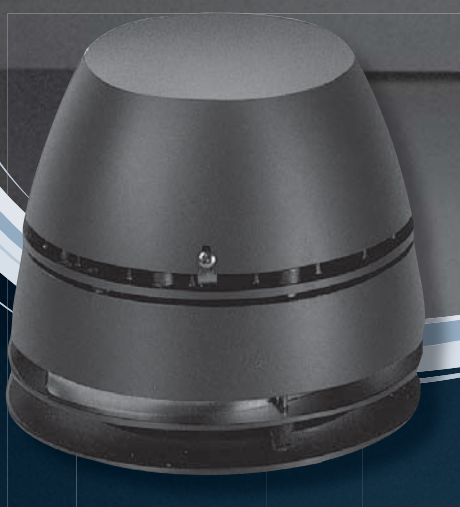


Chimney Fan **RHG**



EXHAUSTO Chimney Fans are supplied with a 2 year warranty. EXHAUSTO is certified according to ISO 9001.

EXHAUSTO

FOR A BETTER FLOW



Chimney Fan – RHG

Description

The EXHAUSTO chimney fan RHG is suitable for stoves and small gasfires. It is located on top of the chimney and provides a controllable negative pressure in the flue and chimney.

A fail-safe system for gasfires is fitted in the fan, which automatically measures the volume flow of the flue gases. Only when the volume flow exceeds the preset and safe level can the gas appliance be used. The fail-safe system will prevent any spillage of combustion products from the appliance when the fan and controller are commissioned correctly.

The fail-safe system complies with BS 5440: 2000 part 1 and BS 6644: 1991.

The fans guarantee optimum draught irrespective of the placing, dimensions or height of the chimney which is beneficial to new or existing installations.

EXHAUSTO chimney fans are offered with a unique money-back guarantee: Should the fan not give you full satisfaction, within 30 days of installation, you may return the fan for a full refund of the purchase price provided an appraisal form had been submitted before your order and a quotation received in return.

Construction

The chimney fans RHG are constructed of corrosion resistant cast aluminium and are designed to work reliably in a hot and corrosive environment year after year.

The fans give a horizontal discharge and can withstand temperatures up to 200°C at the flue exit or chimney top.

RHG is supplied with a centrifugal impeller and a mesh safety guard covering the horizontal discharge. These fans are easily removable for service and maintenance.

The fans are fitted with an entirely closed, asynchronous motor with ball bearings sealed for life. The motor is specifically constructed to provide reliable operation at a high temperature. It is made to international classifications IP54 (protection class) and F (insulation).

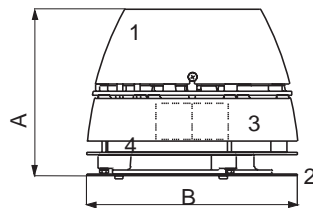
The motor is located inside the motor housing and thus separated from the flue gases. The electrical connection is provided by a heat resistant silicone cable withstanding 200°C.

Specifications

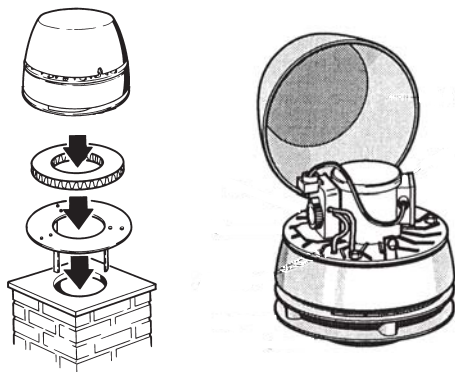
Model	Specifications		Weight	Dimensions	
	RPM	1x230 V Amp/ kW*		A mm	B mm
RHG160	1400	0,4/0,09	10	238	290

*Effect at the motor shaft
Ambient temperature: 20°C
RPM is infinitely adjustable for all 1x230 V motors
The motor is overload protected
Motor protection class IP 54
Insulation class F

1. Motor housing
2. Base plate
3. Motor
4. Ribbed cooling plate



Assembly and fail-safe system



Capacity chart and fan selection

The capacity chart is measured at a flue gas temperature of 20°C. The fan capacity changes with temperature.

Correction of system pressure loss for flue gas temperature higher than 20°C is calculated:

$$P_s, 20 = P_s, t \times \frac{273 + t \text{ (}^\circ\text{C)}}{293}$$

Chimney fan selection

Please use the EXHAUSTO fan selection chart or complete an appraisal form. EXHAUSTO offers a free fan selection service.

The correct chimney fan and control unit are calculated according to EN 13384

